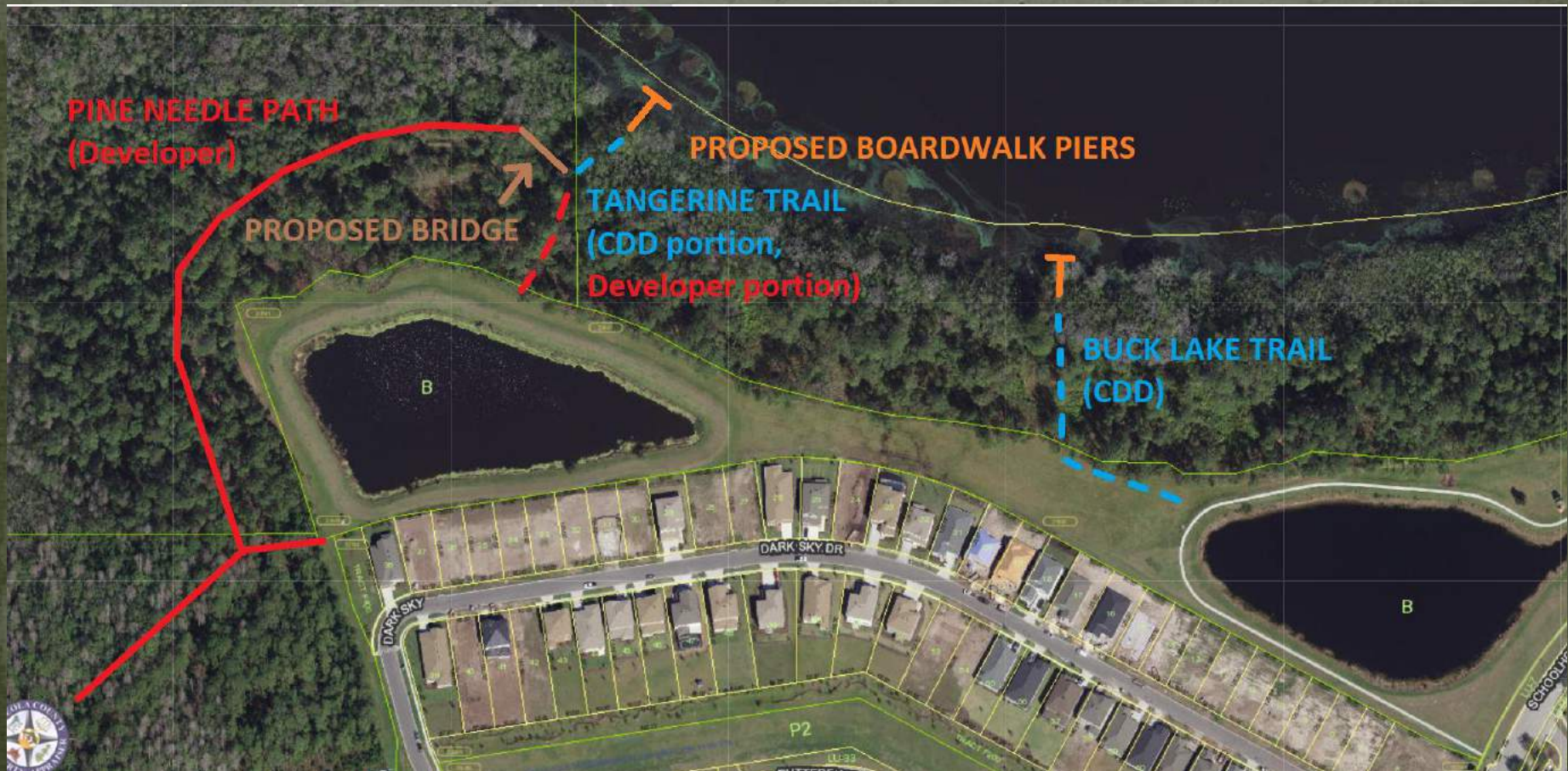


FY2020 Boardwalk Proposals

Harmony CDD

Tangerine & Buck Lake Trails

- Proposed boardwalk pier locations shown in Orange

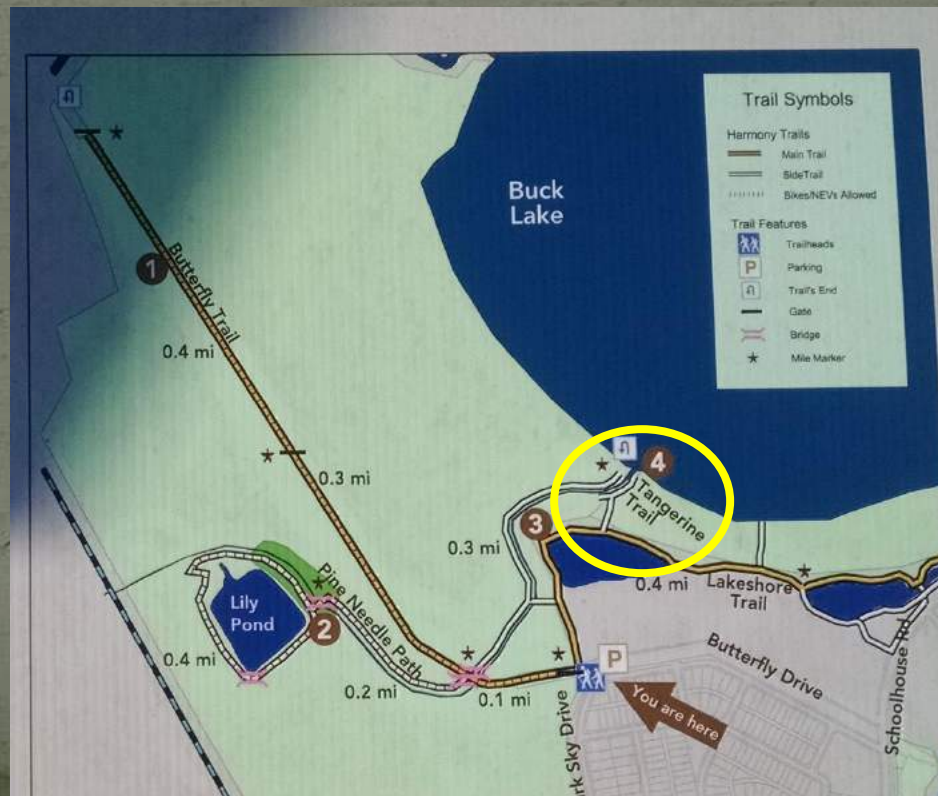


Tangerine & Buck Lake Trails

- Either boardwalk pier would add Buck Lake access most convenient to residents of Cherry Hill and Green neighborhoods
- Both restored trails connect to Lakeshore Trail, which consists of CDD property running from Butterfly Trail all the way to Lakeshore Park
 - Tangerine Trail is easily accessible from raised berm around CDD pond #5
 - Buck Lake Trail is a short distance from existing sidewalk around CDD pond #6
- Both boardwalk piers would be accessible without full boardwalks, but full boardwalks would make them easier to use and would match existing Lakeshore Park boardwalks.

Tangerine Trail

- Behind Cherry Hill, runs along canal to Buck Lake
- Poorly maintained by previous developers, restoration underway by Nature & Animal Committee

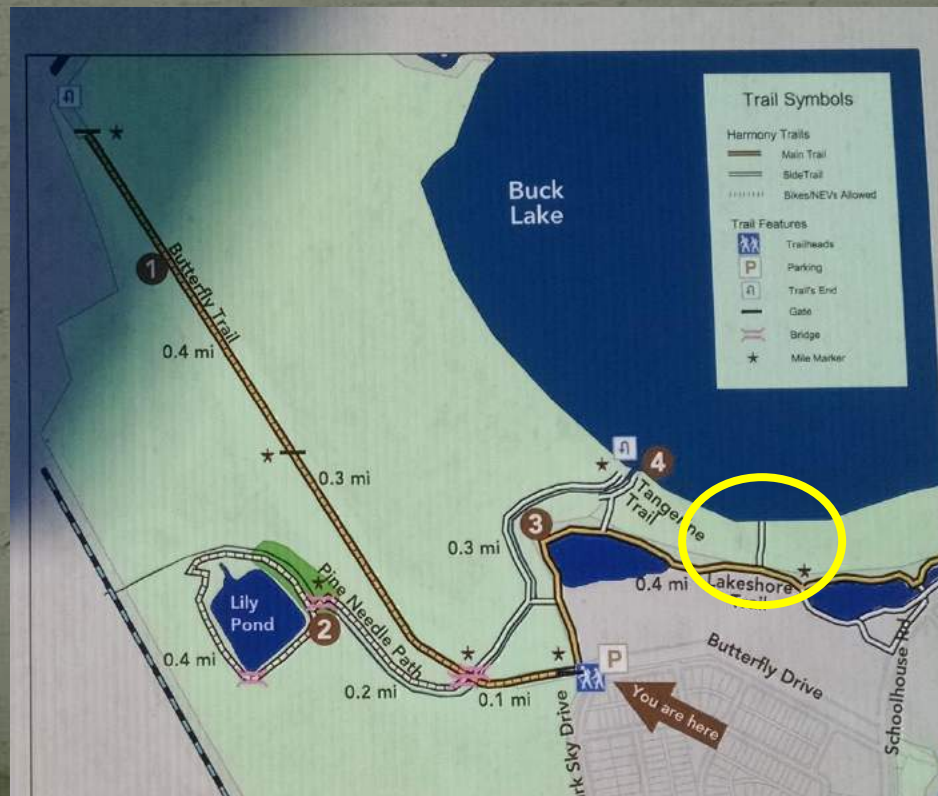


Tangerine Trail

- Dock option: 40' boardwalk approach to 10' x 20' dock with two swings and pergola. **\$13,610**
 - **Dock and approach are completely within proposed CDD Buck Lake parcel**
- Further expansion and connection to existing trails is possible with Developer cooperation in the future.
 - Full boardwalk option: 380' of boardwalk connecting new dock with Lakeshore Trail. **\$42,560**
 - Bridge: 50' golf cart bridge connecting end of Pine Needle Path with Tangerine Trail. **\$7,150**

Buck Lake Trail

- Behind Cherry Hill, runs along canal to Buck Lake
- Poorly maintained by previous developers, restoration underway by Nature & Animal Committee



Buck Lake Trail

- Dock option: 40' boardwalk approach to 10' x 20' dock with two swings and pergola. **\$13,610**
- Full boardwalk option: 280' of boardwalk connecting new dock with Lakeshore Trail. **\$31,360**
 - More if connecting all the way back to existing sidewalk
- Buck Lake Trail is completely within proposed CDD Buck Lake parcel

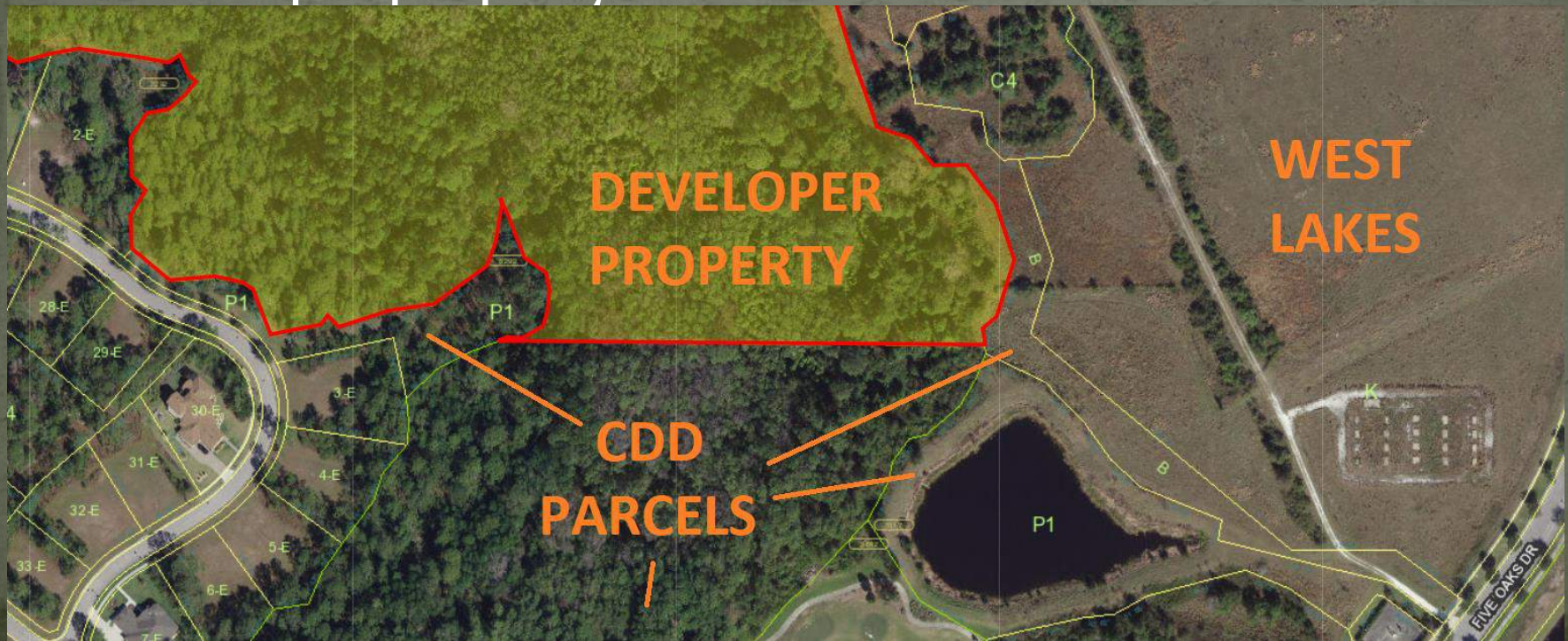
Billy's Trail Cutoff

- Proposed connection between Estates and Billy's Trail, connecting to new alignment along West Lakes parcel
- Creates shortcut between Buck Lake and Cat Lake



Billy's Trail Cutoff

- 740' of boardwalk: \$82,880
- Billy's Trail Cutoff can be built without crossing over Developer property



Additional Costs

- Permitting and engineering will cost between **\$1,500** and **\$4,500** for each project, depending on scope

