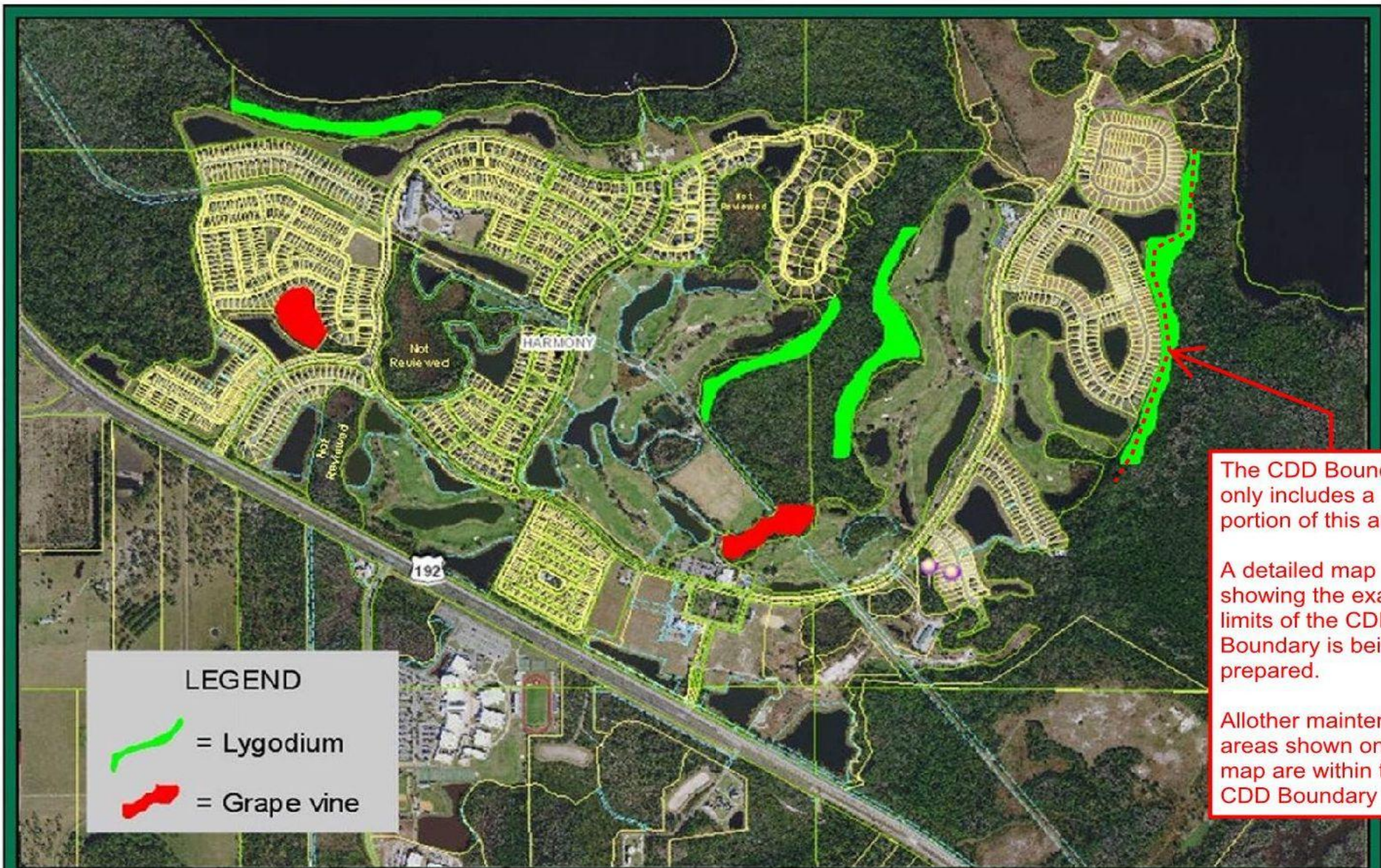


Harmony Community Development District Field Services Monthly Wetlands Report

#	Maintenance Area Name	Acres	Invasive Species VEGETATION IDENTIFICATION Infestation Severity High, Medium, Low	January 2020 (End-of-Month Status) Prescribed Treatment	Treatment Status Pending Activities Percent Complete
Map Tab Shows Local QuickMap Click Links Below For Internet Maps					
1	Buck Lake - South	TBD	LYGODIUM HIGH	Spraying with mixture of RoundUp and Cutrine	80 percent complete at this time Infestation larger than anticipated
2	Green - South	TBD	GRAPEVINE MEDIUM	Sprayed with RoundUp and cut the vines running up the base of the trees	100 percent complete
3	Golf Course - West	TBD	LYGODIUM HIGH		
4	Golf Course - East	TBD	LYGODIUM HIGH		
5	Golf Course - South	TBD	GRAPEVINE MEDIUM	Spraying with RoundUp	Just getting started
6	The Lakes - East	TBD	LYGODIUM HIGH	Treating with RoundUp	Just getting started
7	{Future}	--	----		
8	{Future}	--	----		
9	{Future}	--	----		
10	{Future}	--	----		
11	{Future}	--	----		
12	{Future}	--	----		
13	{Future}	--	----		
14	{Future}	--	----		
TOTAL ACRES		0.0	Total size (in acres) of all foliage maintenance areas		
AVG. TREATED ACRES		0.0	Average infested foliage treated area is roughly 20 %		
<p>Additional Notes: We are getting close to the end on Buck Lake, but we have found three times the amount they surveyed. We have begun treatments on both the golf course and south lakes conservation area. A lot of the areas are taking two treatments to totally get rid of the lygodium because there is a massive blankets covering the ground and growing up the trees. We have to move around to different areas based on wind and weather for the days we are spraying. The results are good, and we have made a major impact on the areas that have been treated. There is a massive amount of fern and it is extremely difficult to reach in order to treat it.</p>					





The CDD Boundary only includes a portion of this area.

A detailed map showing the exact limits of the CDD Boundary is being prepared.

All other maintenance areas shown on this map are within the CDD Boundary

LEGEND

 = Lygodium

 = Grape vine



Austin Environmental Consultants, Inc.
 316 Church Street
 Kissimmee, Florida 34741
 407.935.0535

FIGURE
1

VEGETATION TREATMENT MAP

HARMONY CDD
OSCEOLA COUNTY, FL